

Città Metropolitana Spugna

3° Giornata Nazionale della Prevenzione e Mitigazione del Rischio Idrogeologico

Shirly Mantin, Director & Partner LAND Italia





L

LANDSCAPE

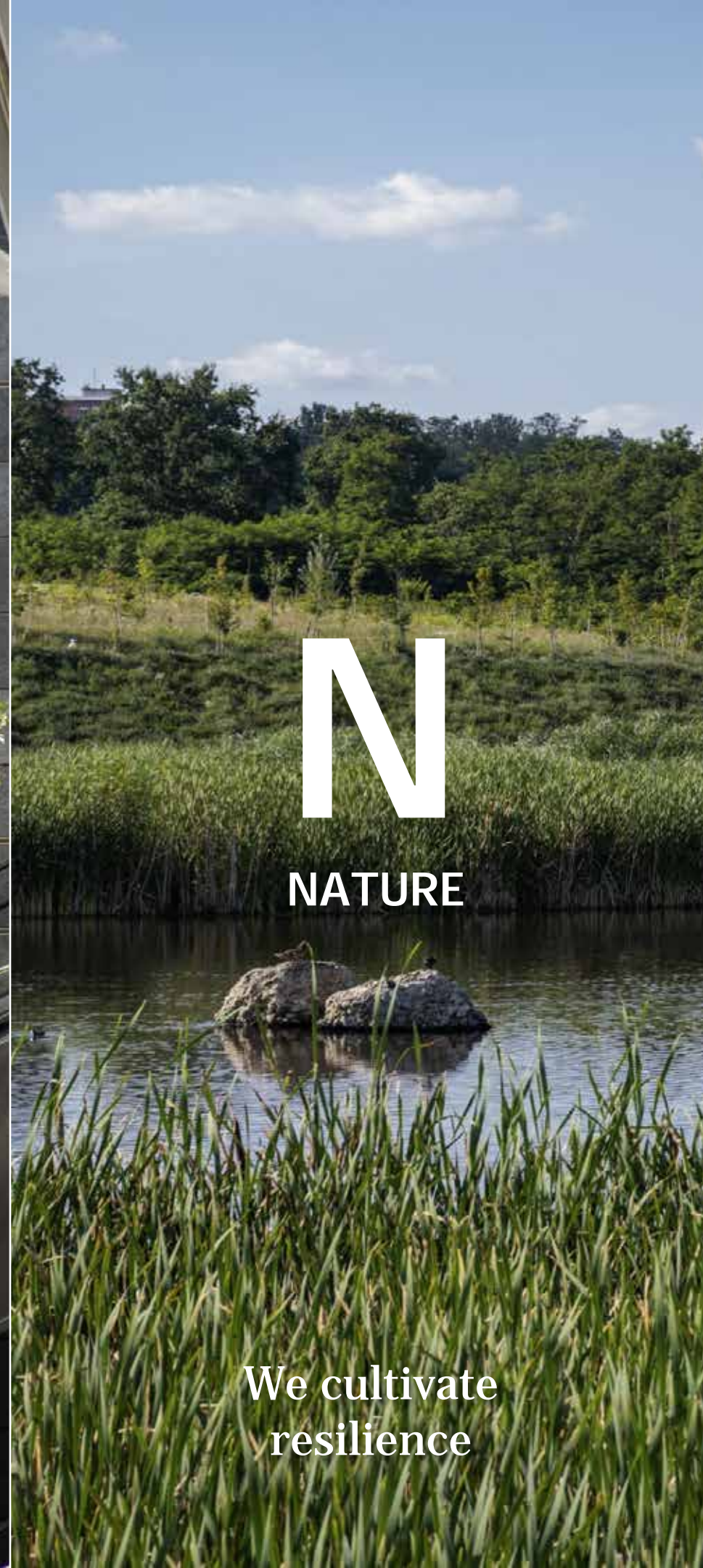
We work at
every scale



A

ARCHITECTURE

We make space
for people



N

NATURE

We cultivate
resilience



D

DEVELOPMENT

We strive for
sustainable development

Landscape is life





SUSTAINABLE DEVELOPMENT GOALS



Nature Restoration Law For people, climate, and planet

22 June 2022
#EUGreenDeal



Obiettivi comuni



In collaboration with Oliver Wyman

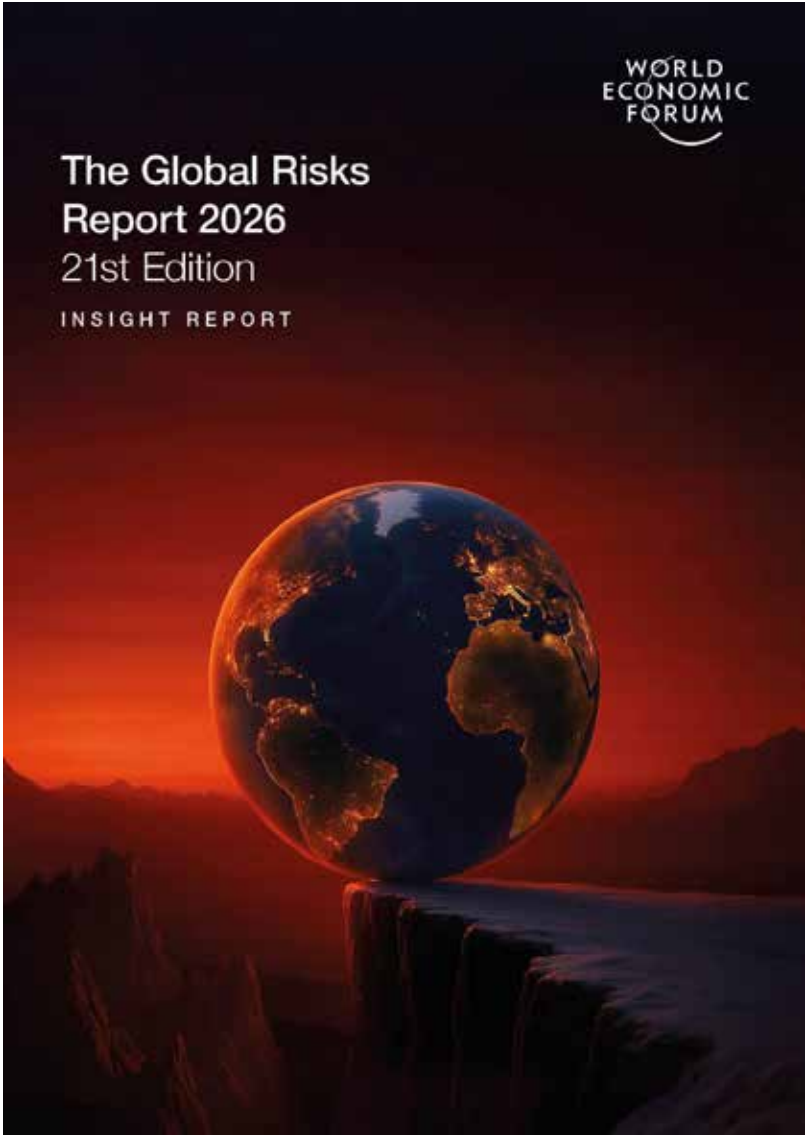


Nature Positive:
Guidelines for the Transition in Cities

Nature-related issues at the top of Long-term risks

According to the results of the Perception Survey presented in the **Global Risks Report 2026** published by the World Economic Forum, issues related to Nature and the environment remain the top risks in view of 2036.

It is more important than ever to **take radical action**, demonstrate resilience, and **cooperate globally** in the face of **widespread uncertainty** and growing competitiveness.



Global risks ranked by severity



Please estimate the likely impact (severity) of the following risks over a 2-year and 10-year period.

Short term (2 years)		Long term (10 years)	
1 st	Geoeconomic confrontation	1 st	Extreme weather events
2 nd	Misinformation and disinformation	2 nd	Biodiversity loss and ecosystem collapse
3 rd	Societal polarization	3 rd	Critical change to Earth systems
4 th	Extreme weather events	4 th	Misinformation and disinformation
5 th	State-based armed conflict	5 th	Adverse outcomes of AI technologies
6 th	Cyber insecurity	6 th	Natural resource shortages
7 th	Inequality	7 th	Inequality
8 th	Erosion of human rights and/or of civic freedoms	8 th	Cyber insecurity
9 th	Pollution	9 th	Societal polarization
10 th	Involuntary migration or displacement	10 th	Pollution

Risk categories

Environmental

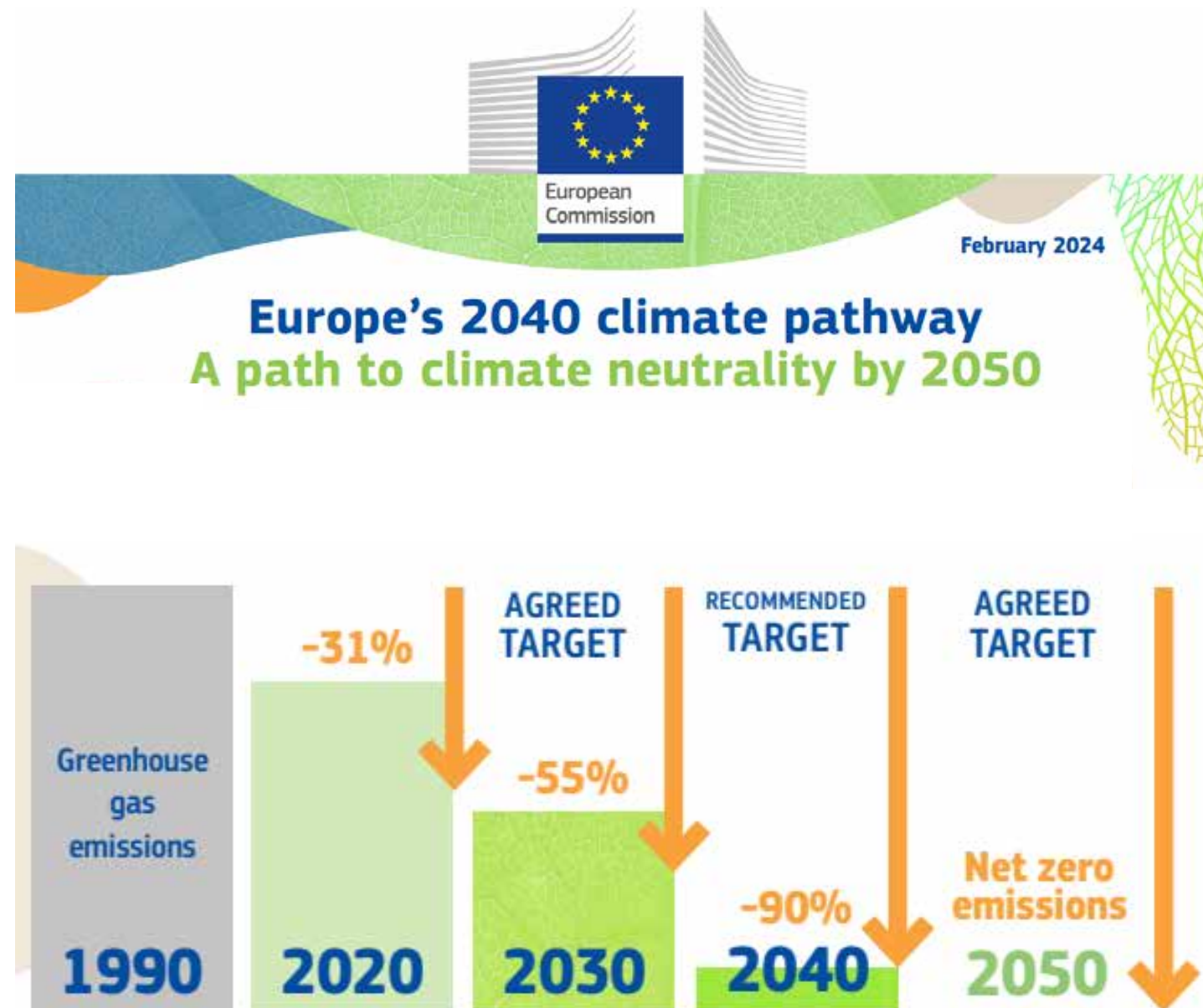
Geopolitical

Societal

Technological

Europa 2020–2050: obiettivi climatici e ambientali

CLIMATE TARGETS



Riduzione delle emissioni nette di gas a effetto serra

NATURAL TARGETS

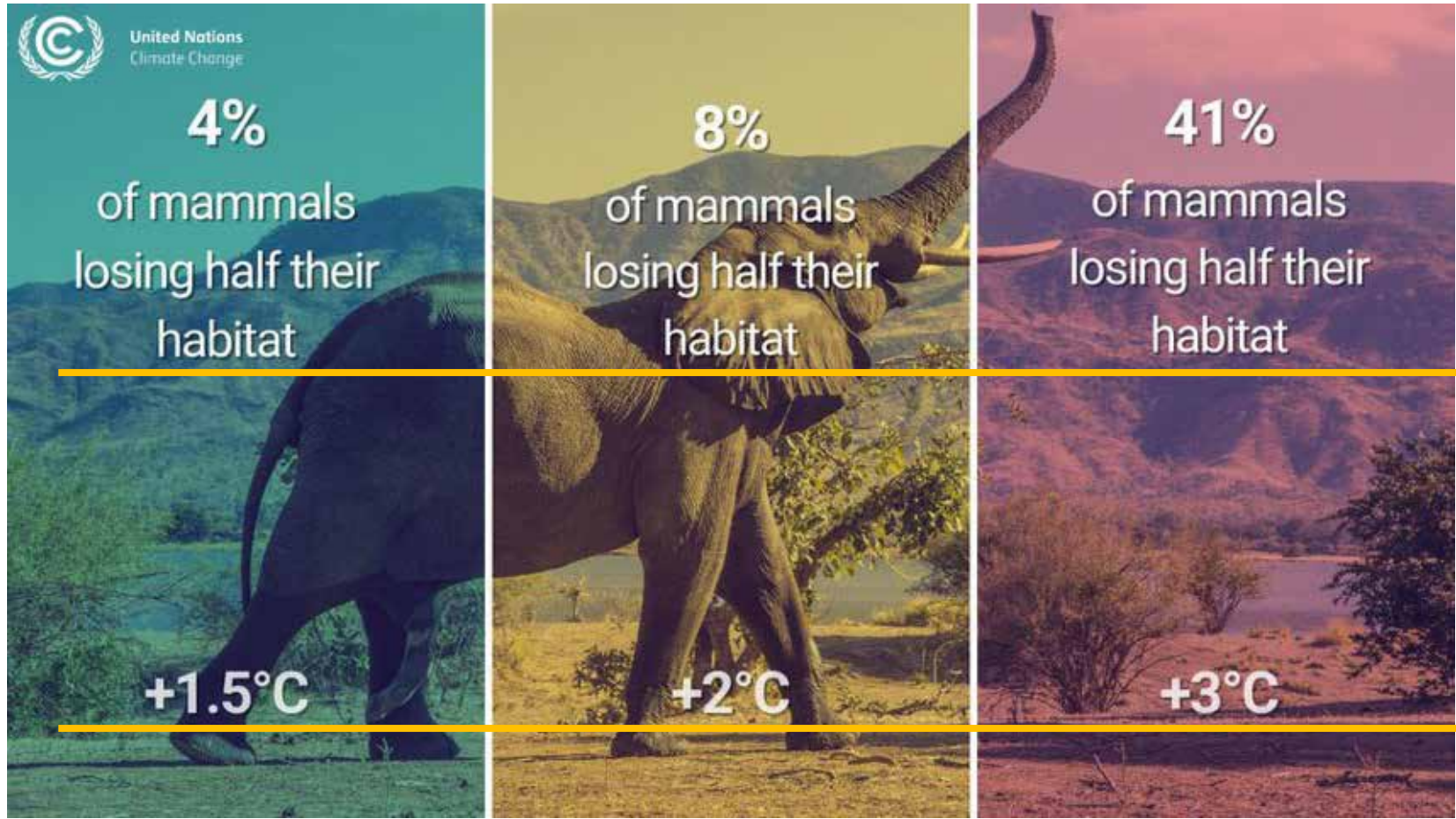


Ripristino degli ecosistemi terrestri e marini

Cambiamento climatico e perdita di biodiversità: due facce della stessa medaglia

“Il cambiamento climatico è una causa primaria della perdita di biodiversità. E allo stesso tempo, la lotta al cambiamento climatico dipende dalla biodiversità come parte della soluzione. È quindi evidente che i due fenomeni sono strettamente connessi” [...]

Elizabeth Mrema, Executive Secretary, United Nations Convention on Biological Diversity



Perdita di
biodiversità



Cambiamento
climatico





Piano Nazionale di Ripristino della Natura (PNR)



MINISTERO DELL'AMBIENTE
E DELLA SICUREZZA ENERGETICA

La natura come motore del cambiamento

Le Nature-based solutions sono interventi:

ispirati e supportati dalla natura

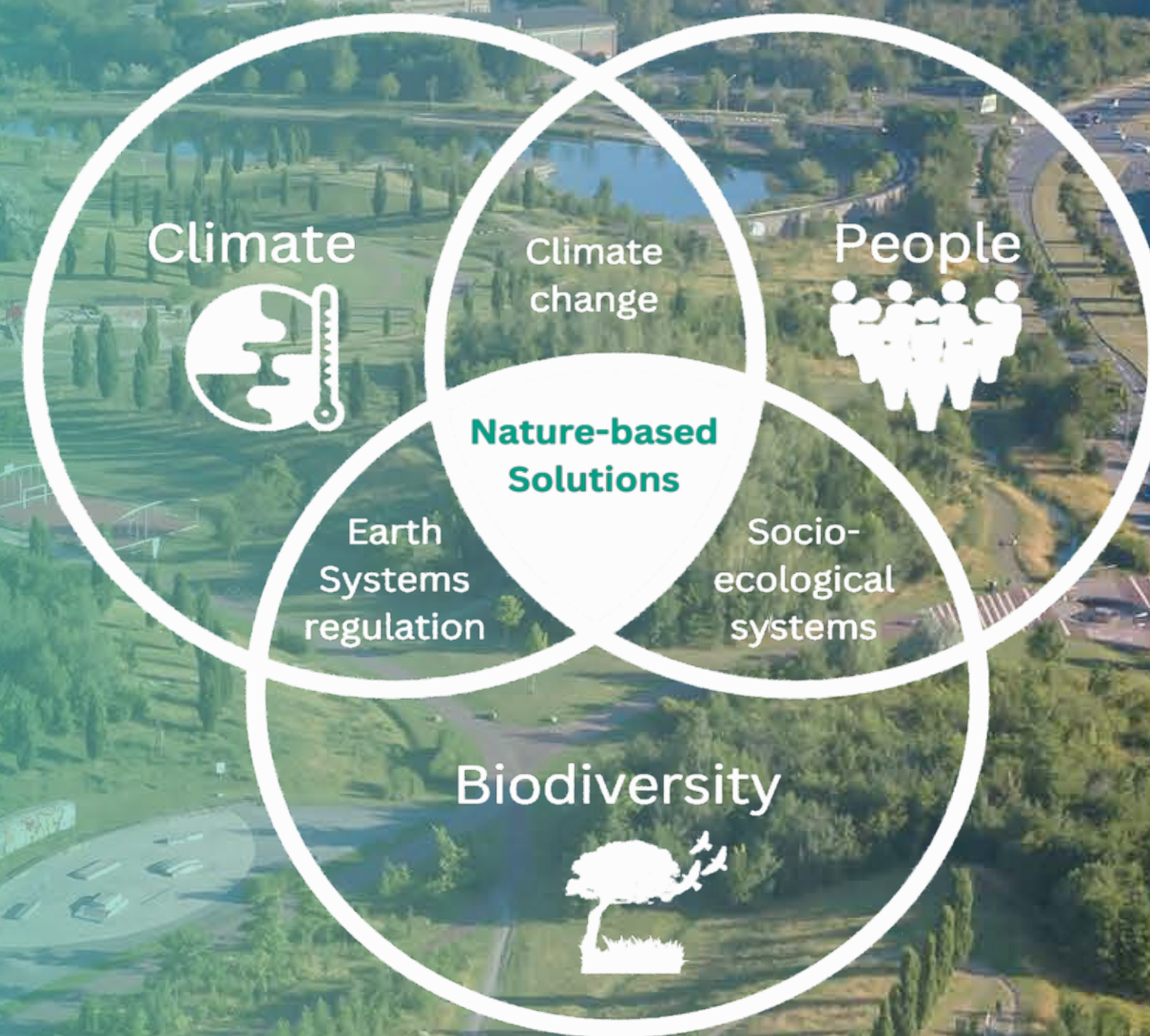
adattati ai contesti locali

efficienti nell'uso delle risorse

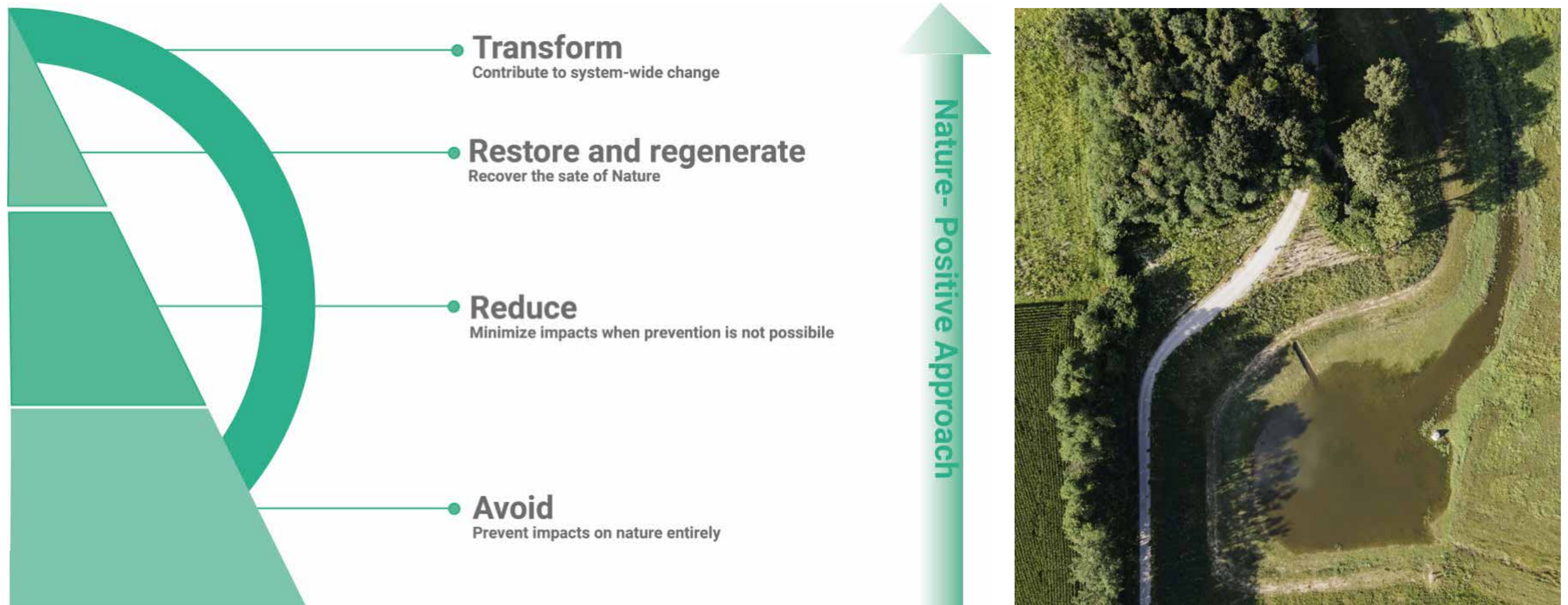
capaci di generare benefici ambientali, sociali ed economici

e costruire resilienza

Fonte: European Commission



Dal modello compensativo al modello trasformativo



Riferimento immagine: AR3T model da Science based Target Network – SBTN sustainability system

Città Metropolitana Spugna



Da superfici impermeabili a infrastrutture climatiche 2023-2026

Promosso da:



Progetto a cura di:

GRUPPO

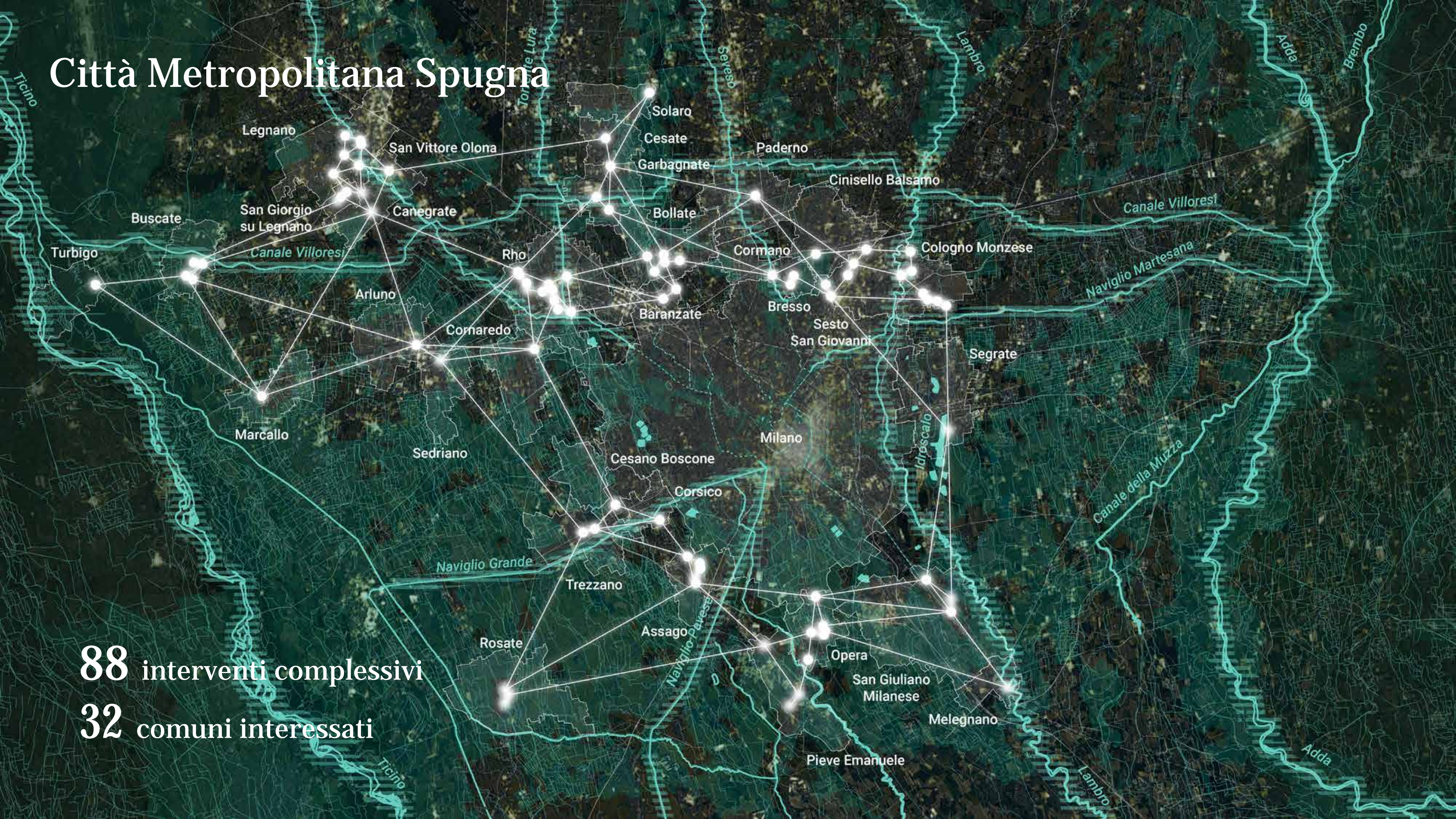


CAP

J+S

LAND

Città Metropolitana Spugna



Città Metropolitana Spugna

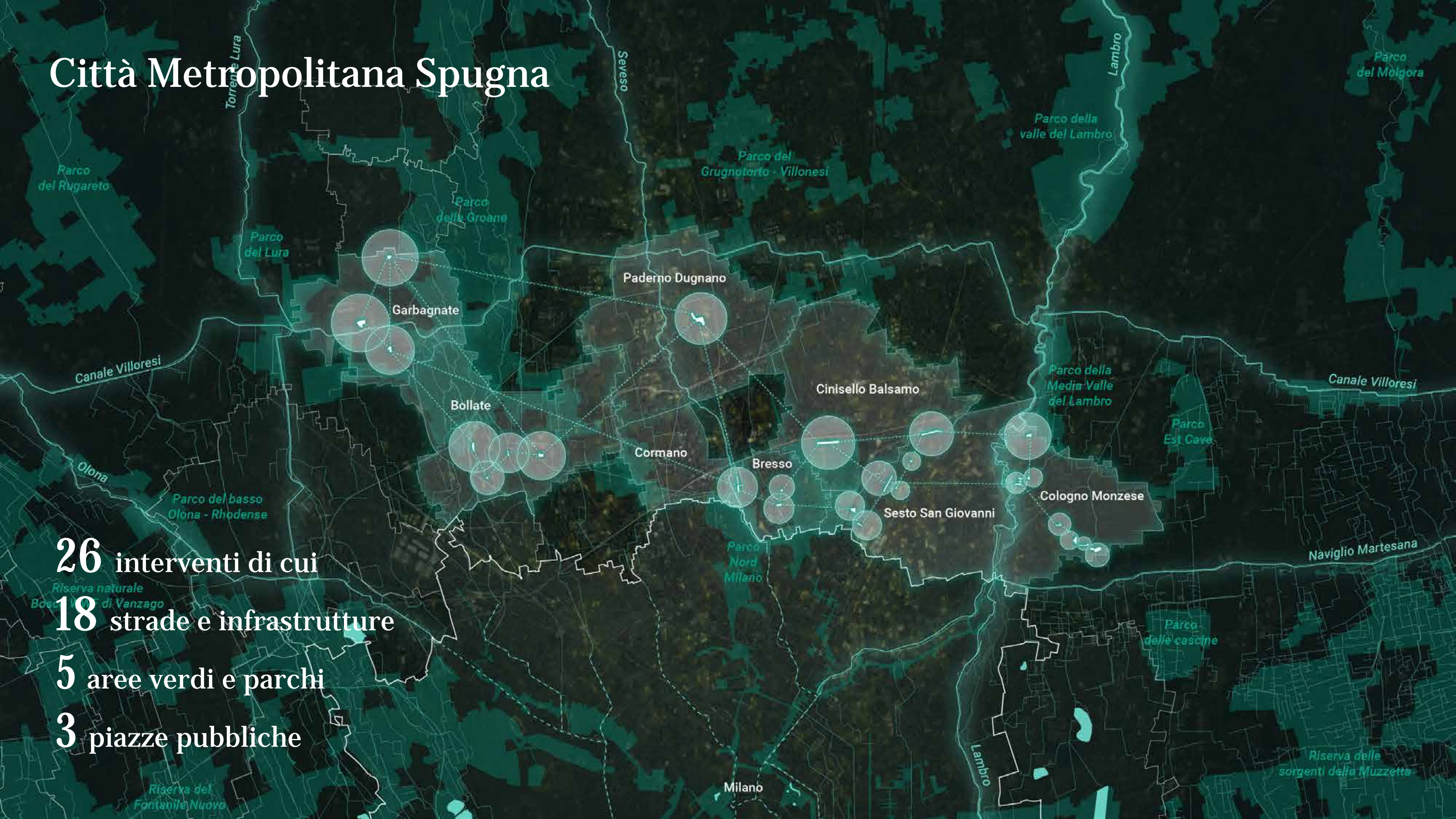


26 di 88 interventi progettati

8 di 32 comuni interessati

Città Metropolitana Spugna

26 interventi di cui
18 strade e infrastrutture
5 aree verdi e parchi
3 piazze pubbliche



Cologno Monzese, MI

Cologno
Monzese

via Galvani





22.810 mq

Area di intervento

8.986 mq

Superficie drenata

8.560 mc

Volume d'acqua
gestita all'anno

Cologno Monzese, Via Galvani



Cologno Monzese, Via Galvani

+768 mq

Piazza allagabile

+4.265

Pavimentazione
drenante

+2

Bacini di infiltrazione

+1

Area eventi

Cologno Monzese, Via Galvani



+32

Alberi

+1441 mq

Aree ad erbacee

+597 mq

Arbusti

Cologno Monzese, Via Galvani



Cologno Monzese, Via Galvani

Cinisello Balsamo, MI

Cinisello
Balsamo

Via Turollo



An aerial photograph of a park area in Cinisello Balsamo, Italy, along Via Turollo. The park features a long, winding orange running track, a blue basketball court, a red playground area, and a green sports field. The park is surrounded by greenery, trees, and a road with industrial buildings in the background. The sky is blue with some clouds.

10.380 mq

Area di intervento

3.897 mq

Superficie drenata

8.560 mc

Volume d'acqua
gestita all'anno

Cinisello Balsamo, Via Turollo





+6.479

Aree Verdi fruibili

+7.988

Pavimentazione
drenante

+2

Bacini di infiltrazione

+5

Nuovi campi sportivi

Cinisello Balsamo, Via Turollo

Cormano, MI

Cormano

via Brodolini



An aerial photograph of a green urban area. A light blue river flows through the center, surrounded by lush green trees and grass. To the right, there are several large, light-colored rectangular buildings, likely industrial or commercial. To the left, there are more trees and some smaller buildings. The overall scene is a mix of nature and urban development.

8.970 mq

Area di intervento

3.559 mq

Superficie drenata

40.030 mc

Volume d'acqua
gestita all'anno

Cormano, Via Brodolini



+13

Alberi

+220 mq

Aree ad erbacee

+128 mq

Arbusti

Cormano, Via Brodolini



Cormano, Via Brodolini



Cormano, Via Brodolini



Cormano, Via Brodolini



Paderno Dugnano, MI

Paderno
Dugnano

via Serra





25.332 mq

Area di intervento

11.215 mq

Superficie drenata

17.840 mc

Volume d'acqua
gestita all'anno

Paderno Dugnano, Via Serra



+164

Alberi

+12.283 mq

Prato

+1.551 mq

Aree ad erbacee

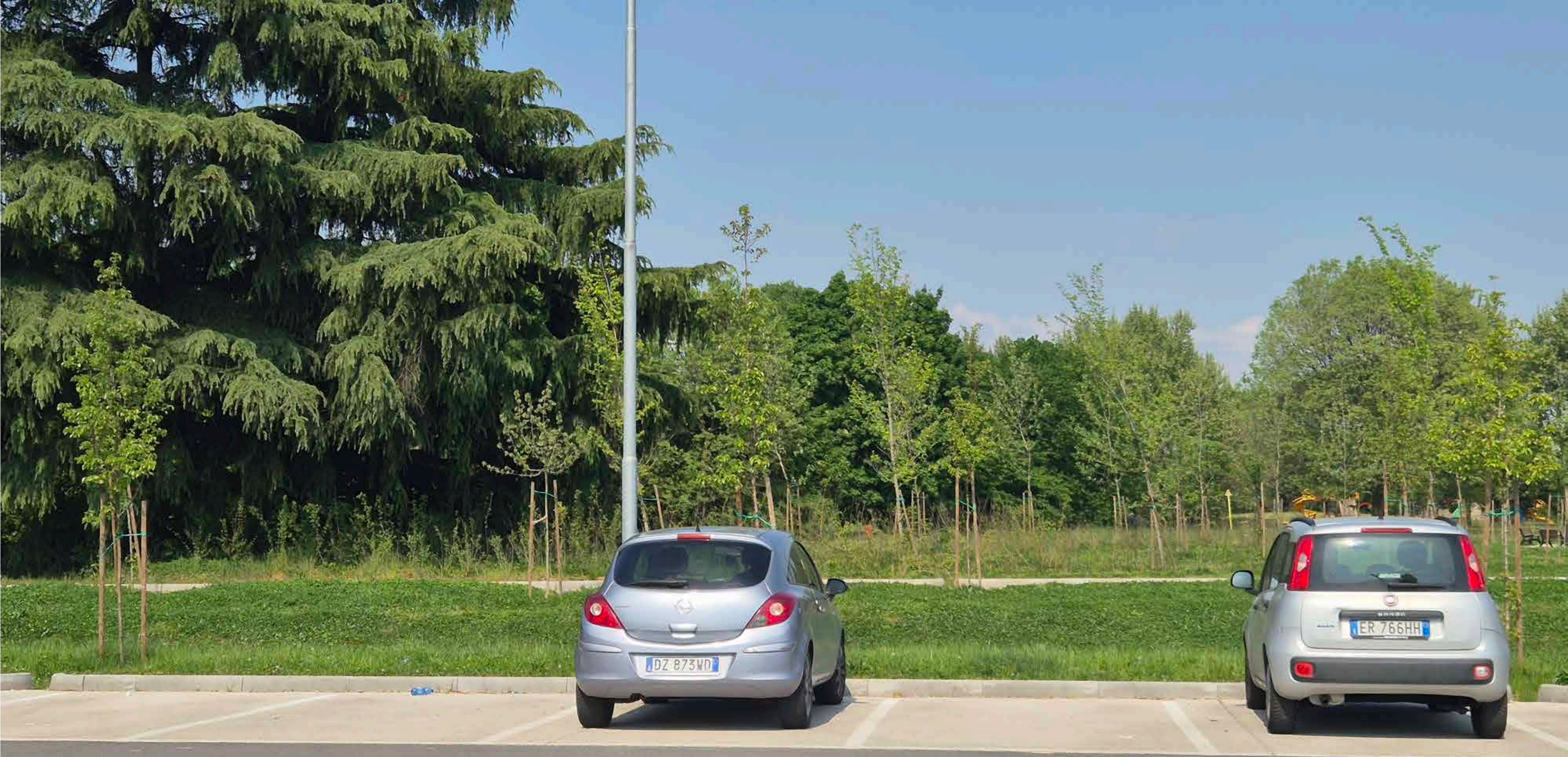
+283 mq

Arbusti

Paderno Dugnano, Via Serra



Paderno Dugnano, Via Serra



Paderno Dugnano, Via Serra

+3.520 mq

Pavimentazione drenante

+2

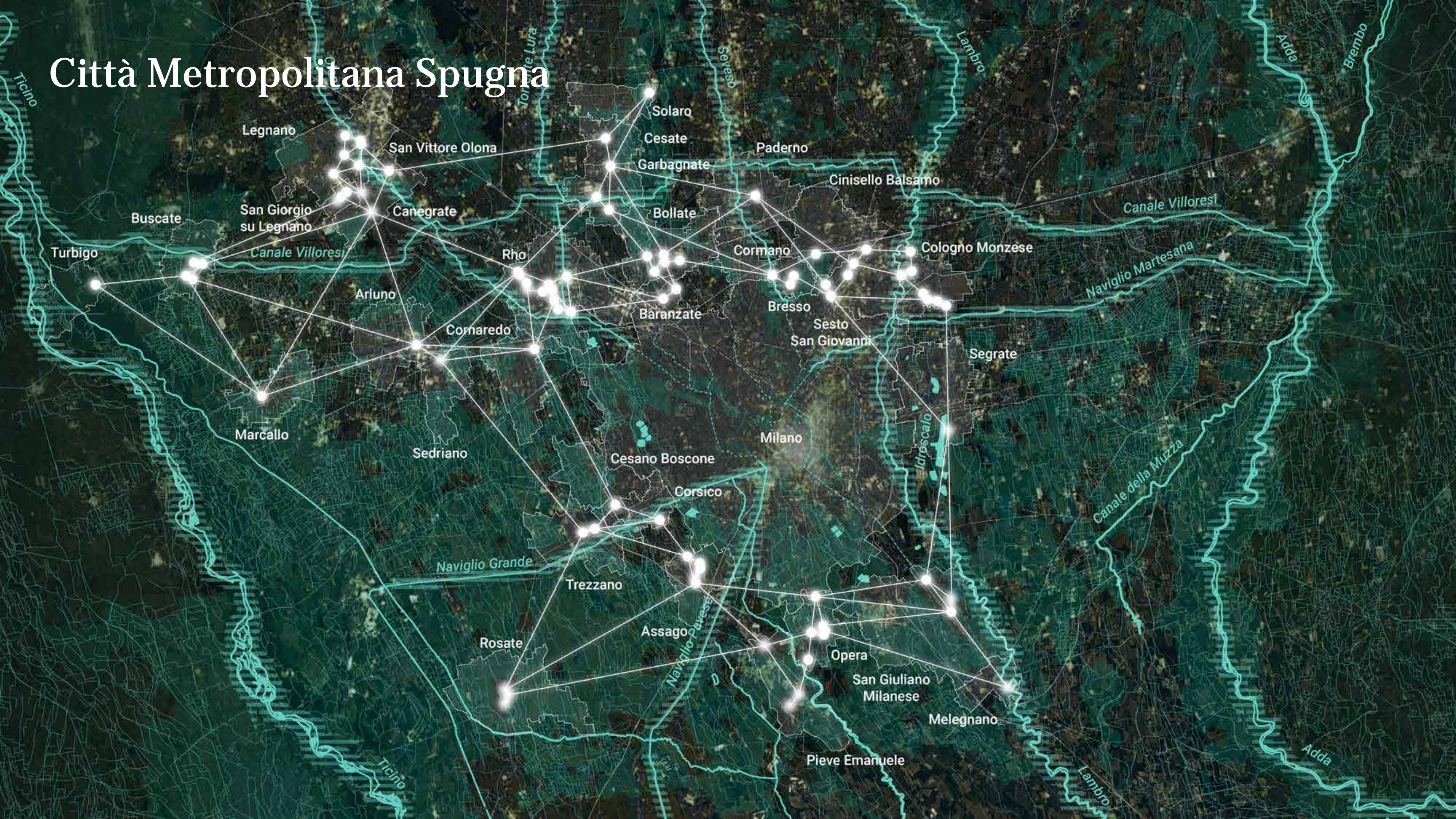
Aree di sosta attrezzate

+1

Area eventi

Paderno Dugnano, Via Serra

Città Metropolitana Spugna



LAND

Grazie per l'attenzione

Stay (re)connected

landsrl.com



AUSTRIA

LAND Consulting Austria GmbH
Mariahilfer Straße 176, TOP 6
AT - 1150 Wien
T +43 1 2535955
austria@landsrl.com

CANADA

LAND Consulting Canada Inc.
275 Dundas Street, Unit 1
London, Ontario
Canada, N6B 3L1
canada@landsrl.com

GERMANY

LAND Germany GmbH
Birkenstraße 47a
D - 40233 Düsseldorf
T +49 (0)211 2394780
germany@landsrl.com

ITALIA

LAND Italia Srl
via Varese, 16
IT - 20121 Milano
T +39 02 8069111
italia@landsrl.com

MENA

LAND MENA
c/o Hundt & Partners
Kingdom Tower, Level 10
Olaya St., Riyadh, KSA
land@landsrl.com

SUISSE

LAND Suisse Sàrl
via Nassa, 31
CH - 6900 Lugano
T +41 (0)91 910 26 50
suisse@landsrl.com